



Safety

Energy Absorbing Collapsible Glove Box Bin

OEM/Vehicle

**Ford Motor Company
2018 Ford Expedition**

System Supplier

Detroit Manufacturing Systems

Material Processor

Detroit Manufacturing Systems

Material Supplier

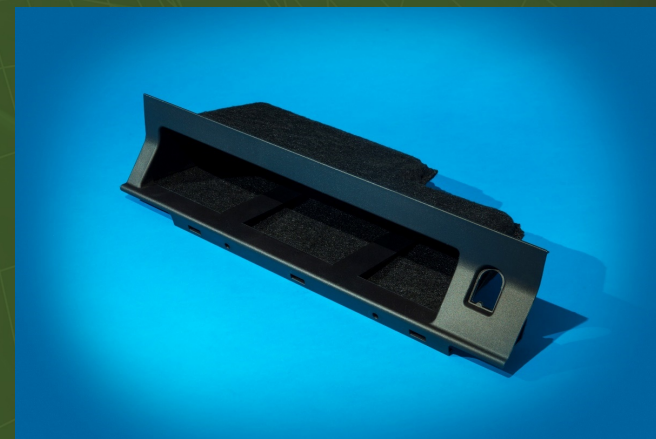
Advanced Composites

Resin

Basell - SG702 PP

Tooling/Equipment Supplier

Lamko Tool & Mold



This bin, that holds and stores the owner's manual, collapses during impact to prevent severe femur loads while providing a beautiful flocked appearance. The new design provides a 400 gram weight savings while lowering femur loads from unacceptable to 5-star compliant. The support structure is injection molded with a compressed PET internal shell. This 100% recyclable, patent pending, concept can be used on any vehicle line to address high femur load issues and assist in achieving a 5-star crash rating.